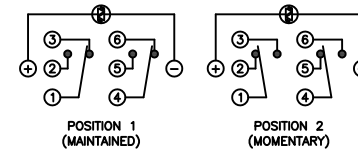
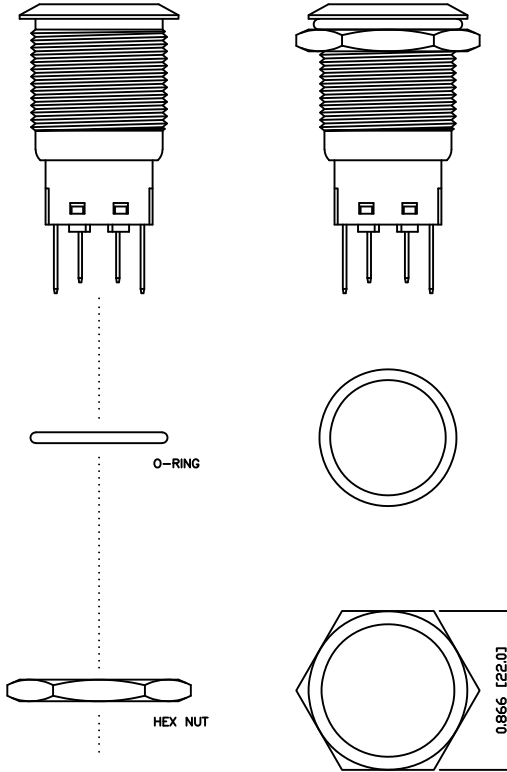
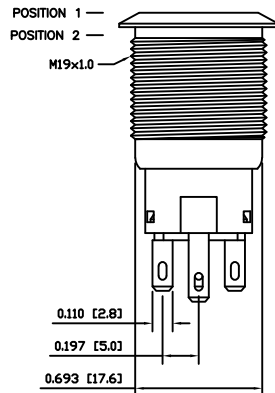
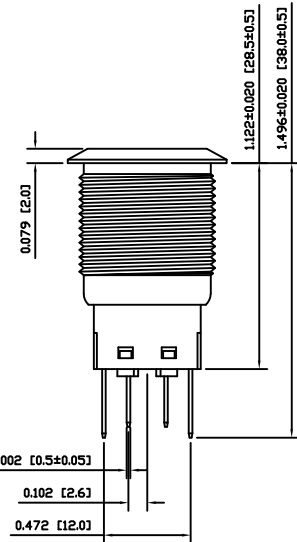


SCHEMATIC



SPECIFICATIONS

- FUNCTION:**
2P2T ON-(ON)
- RATING:**
2A 24VDC
- ILLUMINATION VOLTAGE:**
1.8V 20mA
- CONTACT RESISTANCE:**
Initial: 50mΩ Max. at 1A 12VDC
- INSULATION RESISTANCE:**
1,000MΩ Min. at 500VDC
- DIELECTRIC STRENGTH:**
2,000VAC Min. for 1 Minute
- ELECTRICAL LIFE:**
50,000 Cycles
- MECHANICAL LIFE:**
1,000,000 Cycles
- TEMPERATURE:**
Operating: -20°C to 70°C
- INGRESS PROTECTION:**
IP65
- APPROVALS:**
RoHS
COMPLIANT



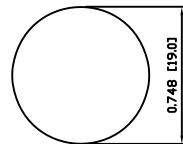
MATERIALS

- BUSHING:**
Aluminum
- BASE:**
Polycarbonate (PC)
Polybutylene Terephthalate (PBT)
- ACTUATOR:**
Aluminum
Polycarbonate (PC)
- HARDWARE:**
Nickel Plated Brass (H59)
- SEALING:**
Silicone Rubber
- INNER ASSEMBLY:**
Polyoxymethylene (POM)
Phosphor Bronze
- SPRING:**
Spring Steel
- CONTACTS:**
Silver/Cadmium Oxide (AgCdO)
- TERMINALS:**
Silver Plated Brass (H62)
Silver Plated Phosphor Bronze
- O-RING:**
Silicone Rubber

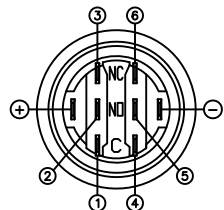
COLORS AND FINISH

- BEZEL:**
Black
Anodized Finish
- ACTUATOR:**
Black
Anodized Finish
- ILLUMINATION:**
Red (Forward)
Red (Reverse)
- MARKING:**
None

SUGGESTED PANEL CUTOUT



MAXIMUM PANEL THICKNESS: 0.433 [11.0mm]



BODY	A	09/07/24	CAB
COLORS	A	09/08/05	CAB
MATERIALS	B	09/10/16	CAB
SPECIFICATIONS	A	09/07/27	CAB
REFERENCE	REV.	DATE	BY

THE INFORMATION CONTAINED IN THIS DOCUMENT IS PROPRIETARY TO E-SWITCH AND IS NOT TO BE COPIED OR TRANSFERRED

C	UPDATED RATING TO 2A @ 24VDC	23804	10/15/18	MJR
B	CORRECTED TERMINAL MATERIAL AND TERMINALS	PCRD0187	09/10/21	CAB
A	INITIAL RELEASE	PCRD0051	09/08/05	CAB
REV.	DESCRIPTION	PCR	DATE	DRAWN BY

DIMENSIONS	
INCHES [MILLIMETERS]	
GENERAL TOLERANCES	
±0.008 [±0.2] / ±1'	
SCALE	PROJECTION
DRAWING NOT TO SCALE	1st Angle

PV4F2H011-311

DRAWING NUMBER 52-PV4F2H011311	DATE OCTOBER 21, 2009	REVISION C
-----------------------------------	--------------------------	---------------